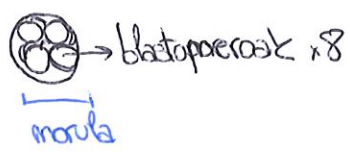


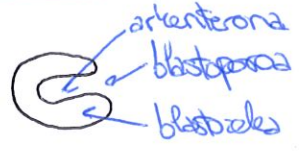
Morula



Blastula



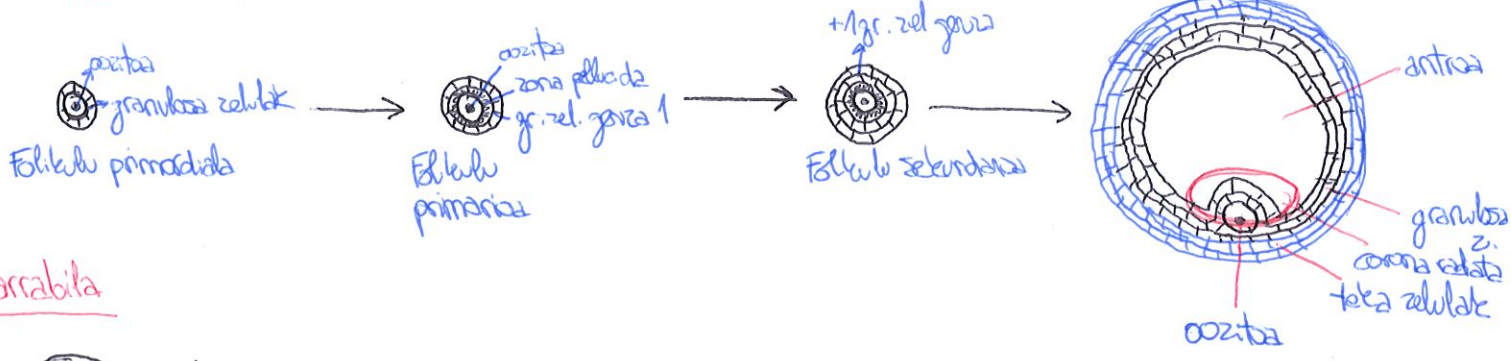
Gastrula



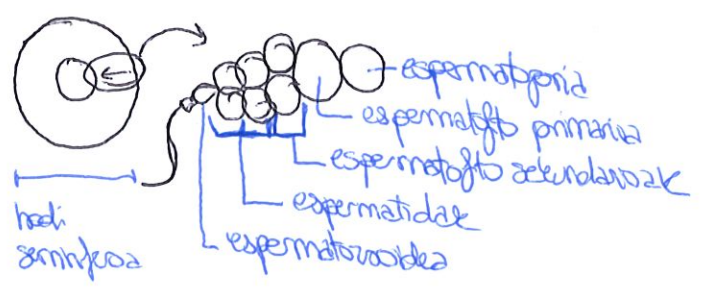
100EN ZOLOGIA (PRAKTIKAK)

- EP. -
- PRE. -
- KON. -
- MUS. -
- NER. -

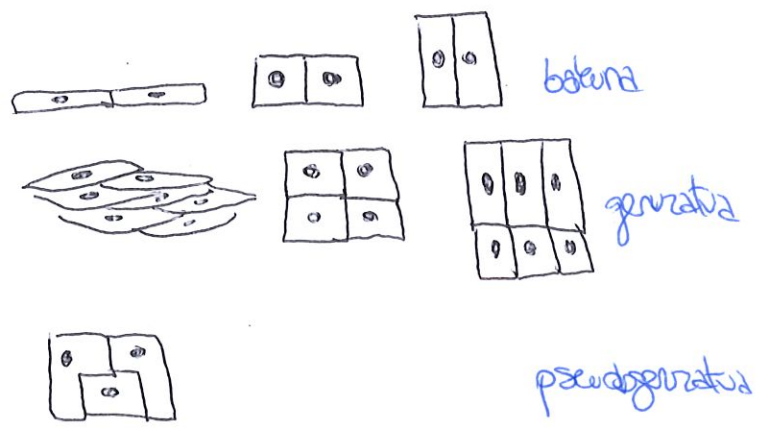
Ovulogija



Barabara



GAJNEZIVNA EPITELIJA



+Tranžizo epitela

GURVİN ERİJELİY

EXOKRİNOAK

- olie baddu jınrapı berezia



- simple / compound
- tub / acin / alve.
- sero / muc / sm
- exo / endo / kırı
epitel

ENDOKRİNOAK



Folikulo Kapilara



GANTZ GURVNA

- endotimo
- exepitelal
- albedar
- simple
- berezia
- Holokrinna (zelula osaz astatzen du)



xasto

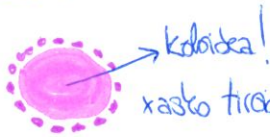
IZERDI GURVNA

- endotimo
- tubular
- simple
- exepitelal
- bereziak
- merokrinak



komplexua

-Tiroidea



koloida!

xasto tiroidea

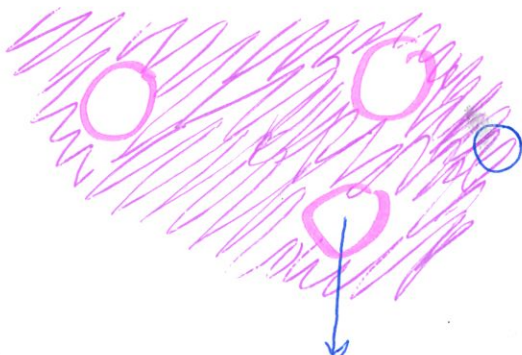
- junim epitelis
- kurbatuta
- endokrinna
- forma folikularra
- hormonaak jasatu



xasto paratiroides

- endokrinna
- lobatuta ant.

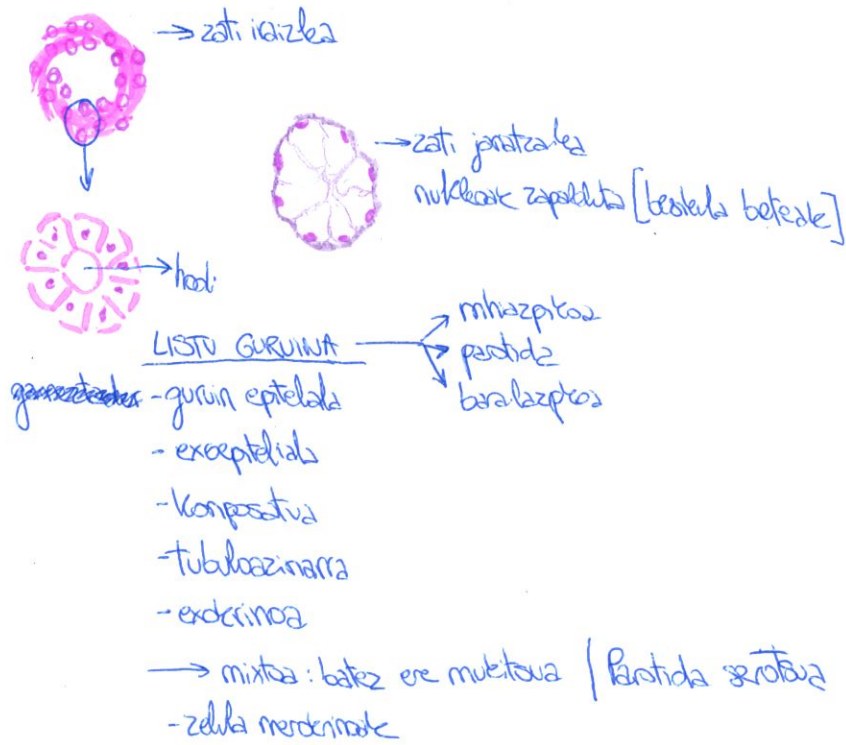
-Pantekosta



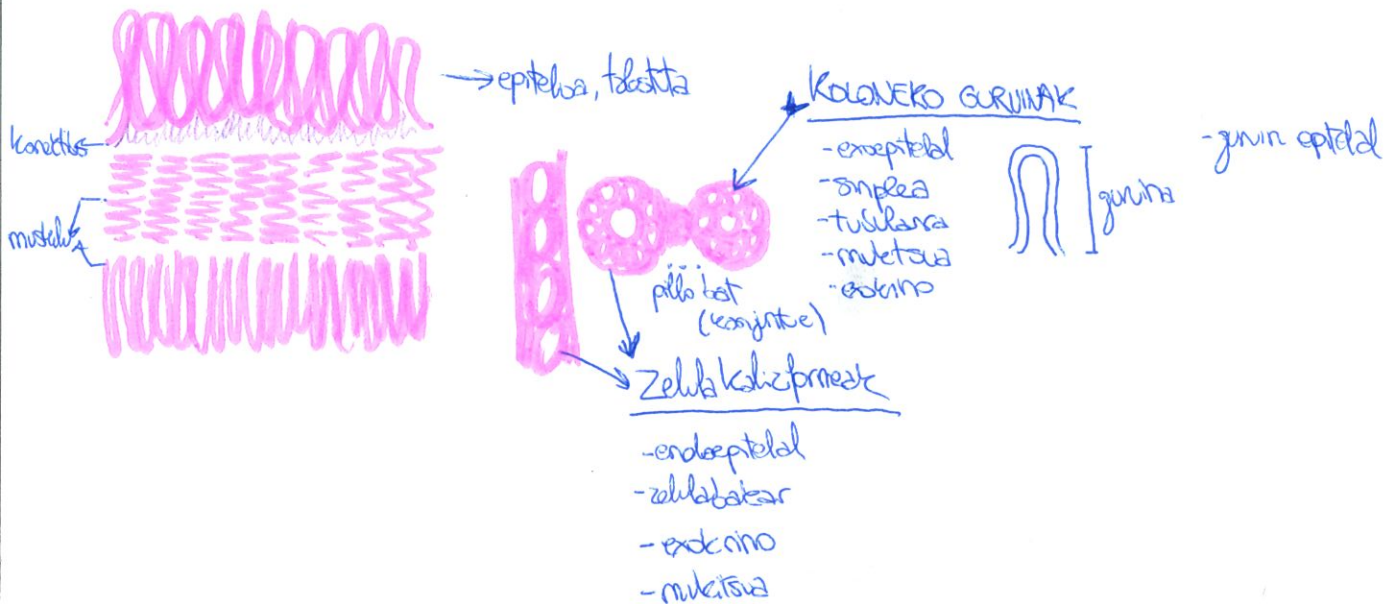
- merokrinna
- exokrinna
- exepitelal
- komposatua
- zuntakelak
- entonex jariozpena duakelak
- zelula

- endokrinna
- Langerhans kurbatuta
- lobatuta antokrinna

• Mammal salivary glands:



• Kolona



EHUN KONERTIBOA

EK zuntzeskatua.

Laxoa → nukleo ugari
(epitelioean)

Dentsa → nukleo gutxi, zuntzak gehiebat

- Modelatua → orientazio zehatza
- Ez modelatua

EK adiposua.

Zelula bolubatarak = zuntzak (EKAZ)

Zelula bolubantzak = arrea (EKAA)

EK elastikoa.

(Arterian)
base elastika → kanpo elastikoa

• Bestela  (polim)

+ZELULAK

- Fibroblastak (ekz denak)
- Adipozito (eka denak)

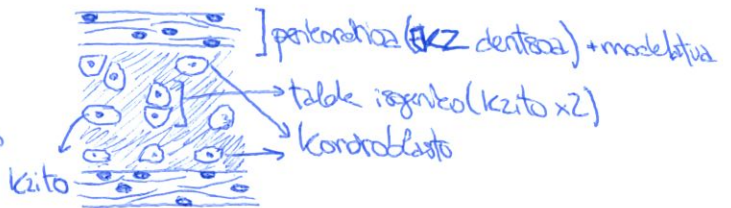
+ZUNTZAK

- Kolajeno
- Elastiko

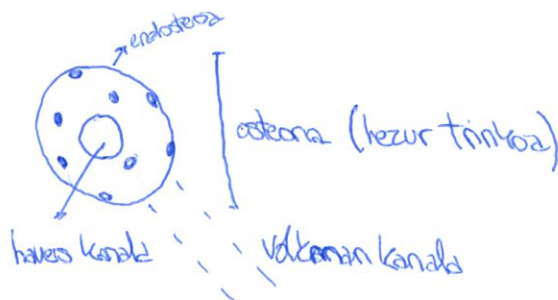
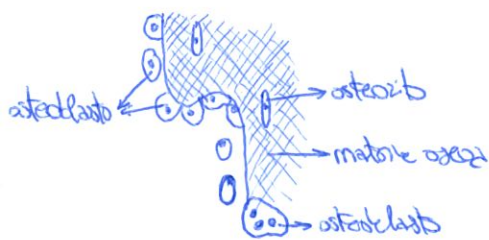
EK. kartilaginosa

• Kartilago hialina

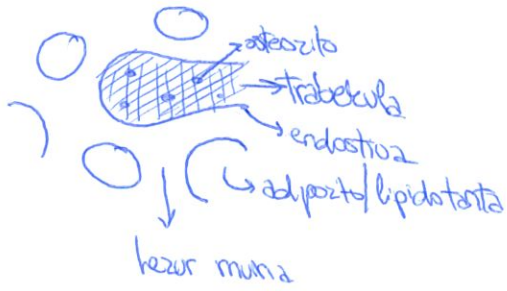
- Kondroblastak: perikondrio azpian
- Perikondria: kartilago inguruan
- Kondrozitak: aintzatan → xZ = table isogeniko
- Matricea (beste denak)



EK osua: Hezurra.



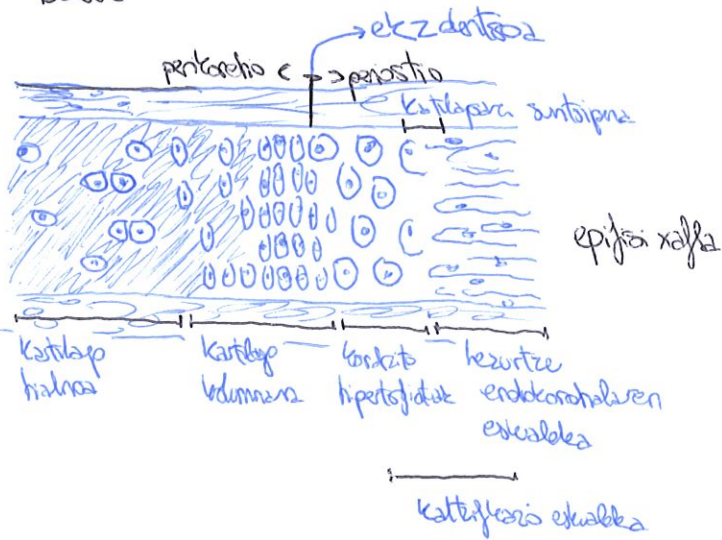
Hezur arda



Hezur triklea

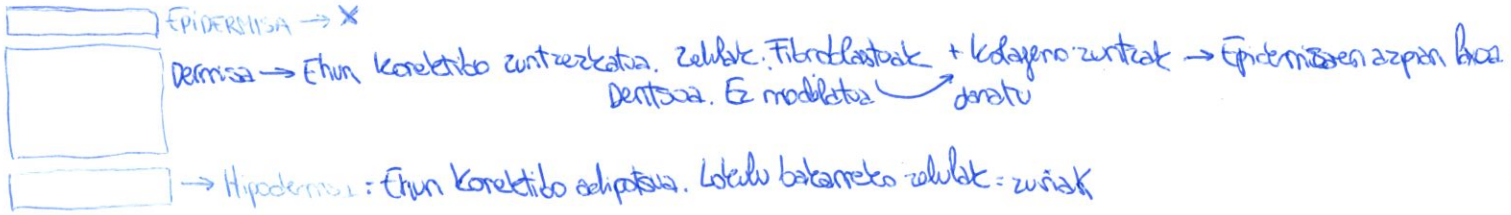
• osteocitn.

+ BONUS



4. PRAKTIKA : 100 Korektiboa

UGAZTUNEN DERMISA



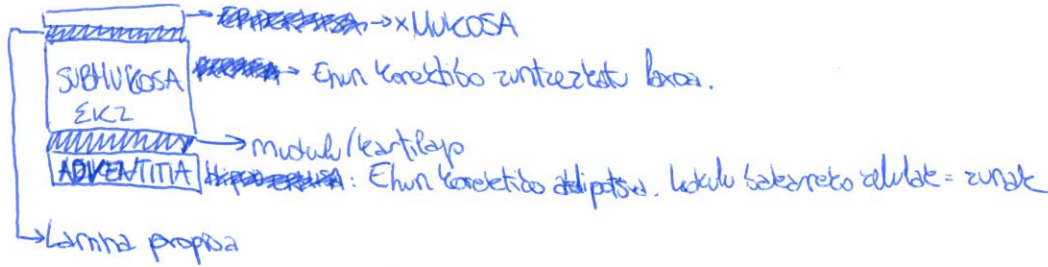
Laxoa → + zelula - zuntz

dentsoa → - zelula + zuntz

Ez modelatua < dentsoa [desant.]

modelatua < dentsoa [antolatua]

TRAEA



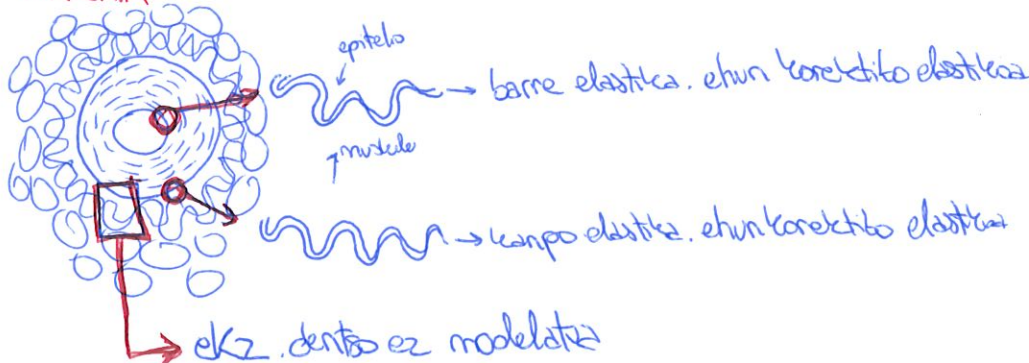
MUKOSA : 100 epitelala

LAMINA PROPIA → normalean ekz. laxoa trakean dentsu

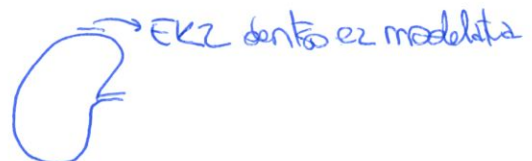
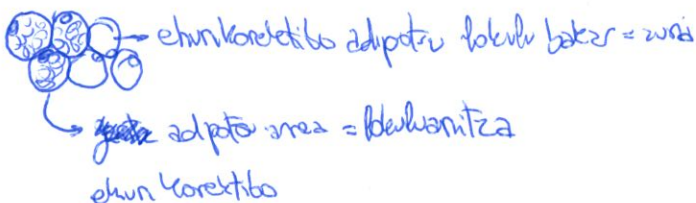
SUBMUKOSA : gurinak → Ehun korektibo zuntzekatua baxa. Ez modelatua

ADVENTITIA : ehun k. adiposua, lokulu bakarreko zel. zuria + ekz dentsoa.

ARTERIA

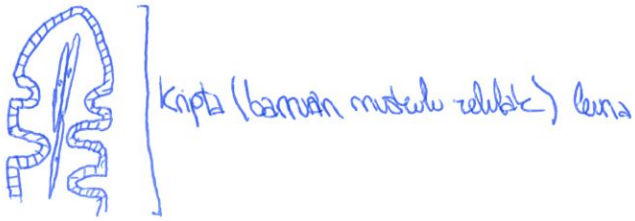
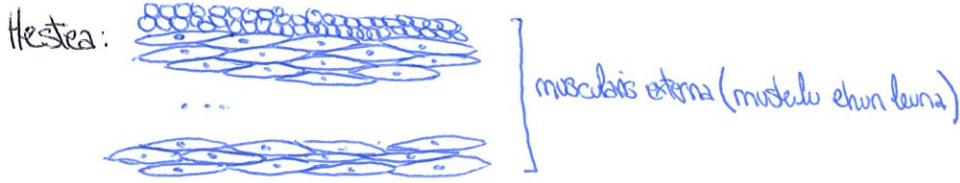


GILTZURRUNA



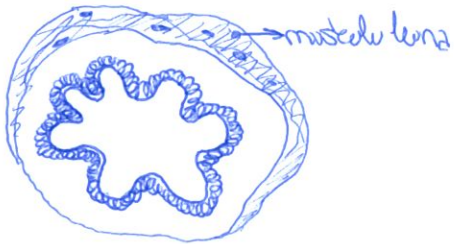
EHUNEN BIOLOGIA (3. AZT)

MUSKULVA

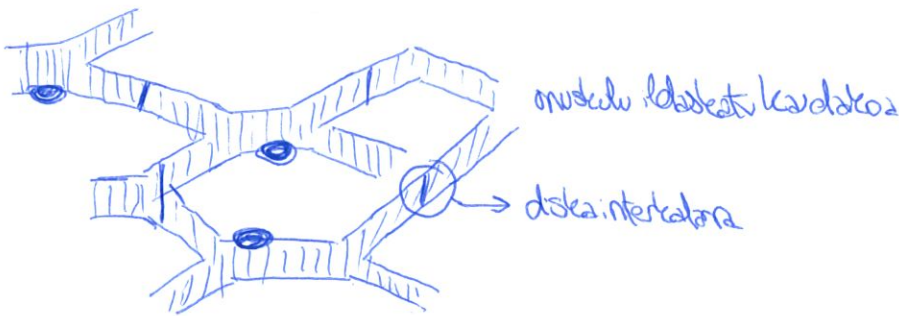


Birika

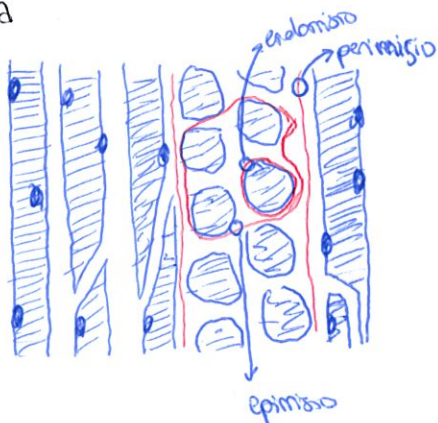
Barruan inguan musculus leana guza bat (zelula lozangak)



Bihotza



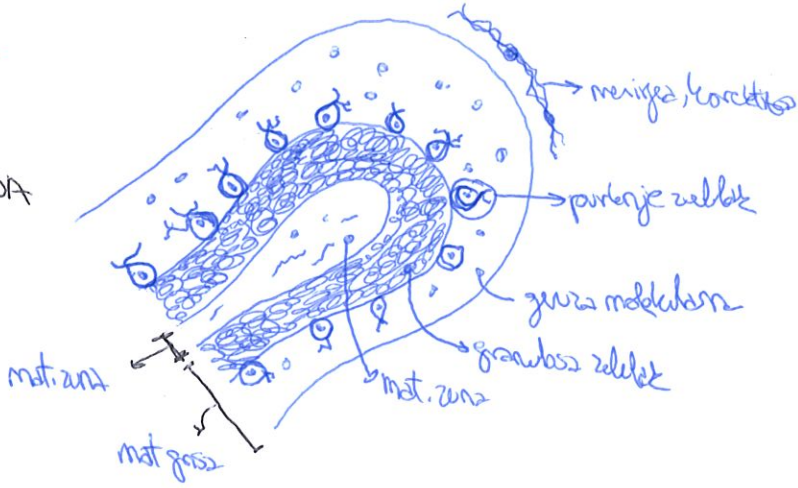
Mihia



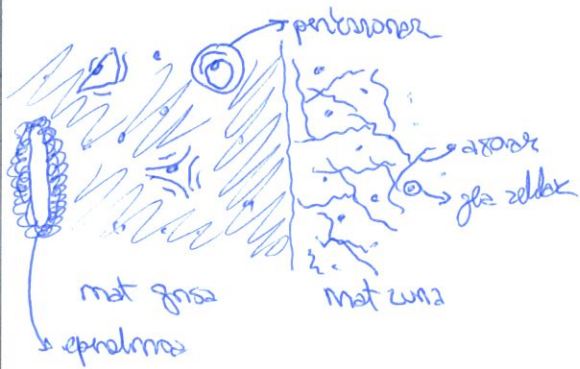
musculus idarkatu etedelekoa

NERVOA

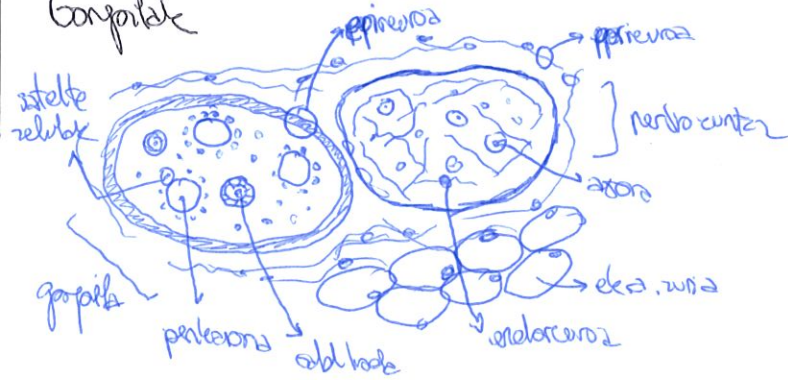
ZEREBELOA



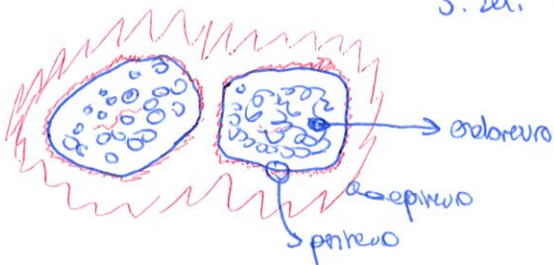
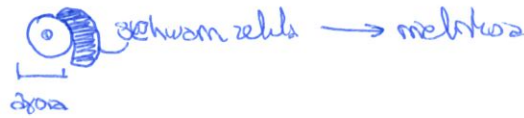
Bizkarneur muna



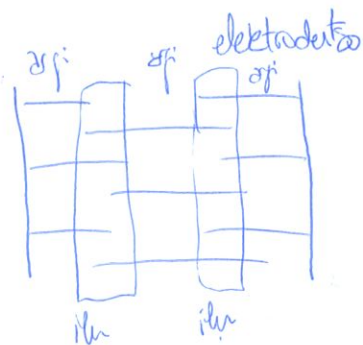
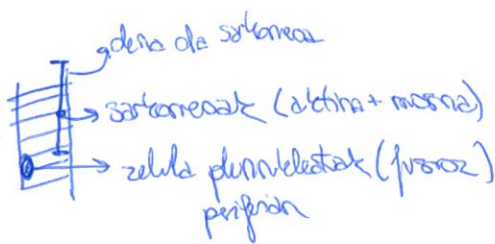
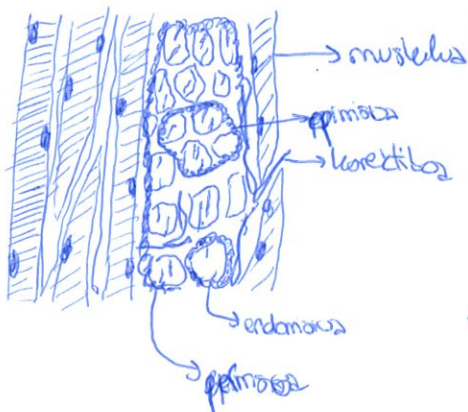
Gongritak



Nervo periferkoz



MIIIA (muskulu ibaketa)

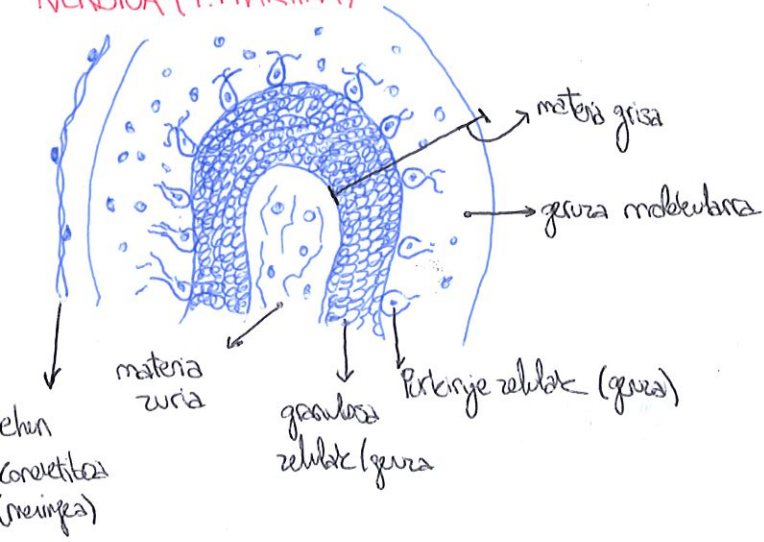


muskuluko konektibo

epi: zuntzak sartzean elkarrekin

ppi: zuntzak elkarrekin

NERVIOA (7. PRAKTIKA)



ZEREBELDA

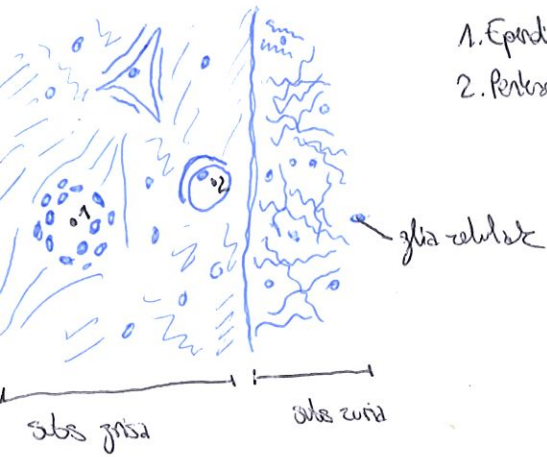
Subs. zuria: axoiak

grisa: perikaryoak

+ glia zelulak



BIZKARREZUR MURUA

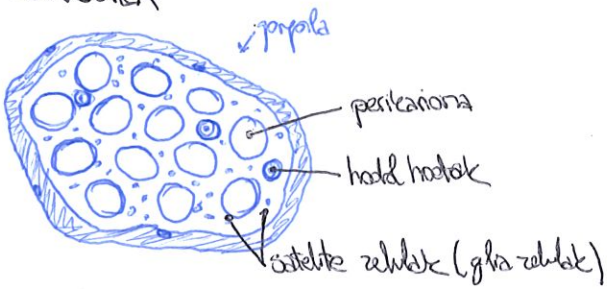


1. Epindimia

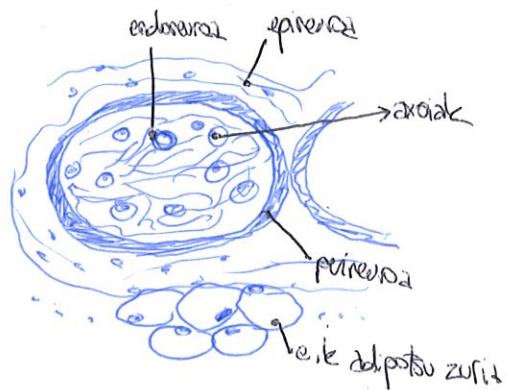
2. Perikaryo

Kantakaban korretiboa

GONGOLA



+ nerbio



NERVIO PERIFERIKOA

